

# AgcCIs

**C**oncurrent  
**L**icense  
**S**erver  
for WinIGS

**AgcCIs**  
**Installation &**  
**User Manual**

Software Version 1.41  
May 1, 2012

Copyright ©  
A. P. Sakis Meliopoulos  
1998-2012

# NOTICES

## **Copyright Notice**

This document may not be reproduced without the written consent of the developer. The software and document are protected by copyright law.

## **Disclaimer**

The developer is neither responsible nor liable for any conclusions and results obtained through the use of AgcClis program.

## Contents

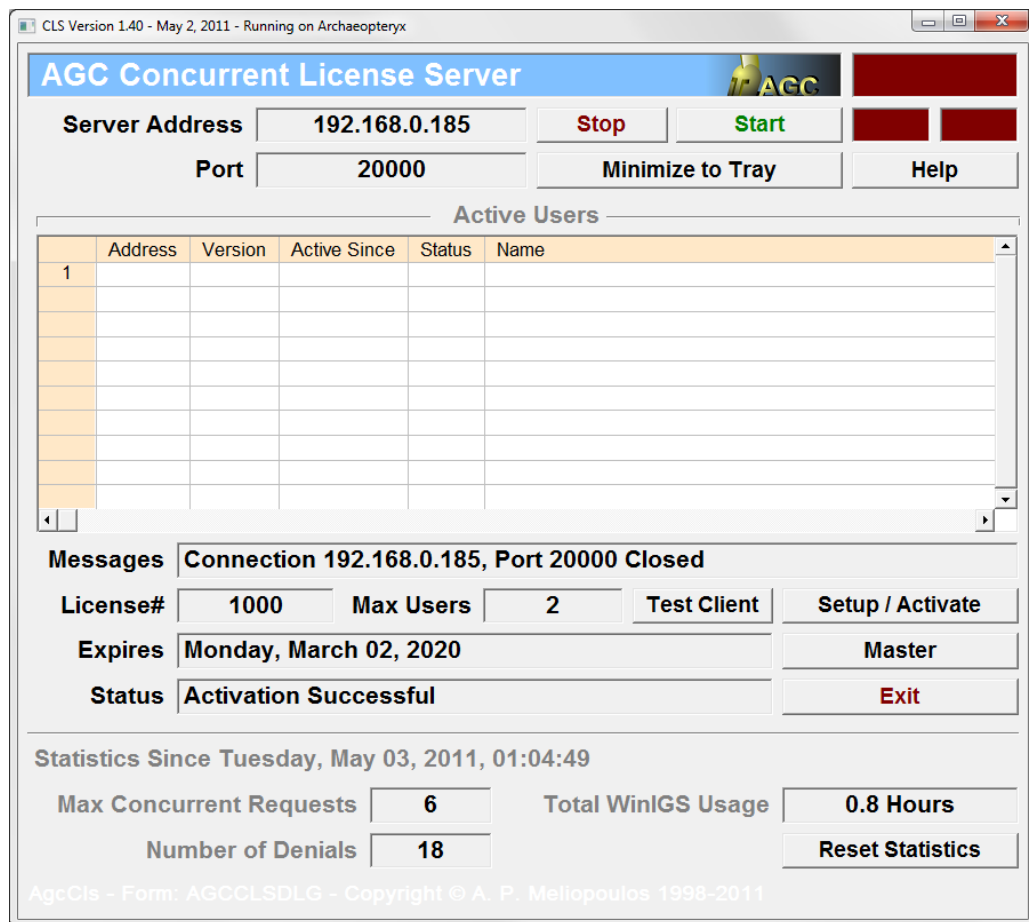
<i>Concurrent License Server License Update</i> .....	4
<i>Concurrent License Server Installation</i> .....	10
<b>Setting Up WinIGS Application to Access License Server</b> .....	14
<b>Running AgcCls as a Service</b> .....	16

# Concurrent License Server License Update

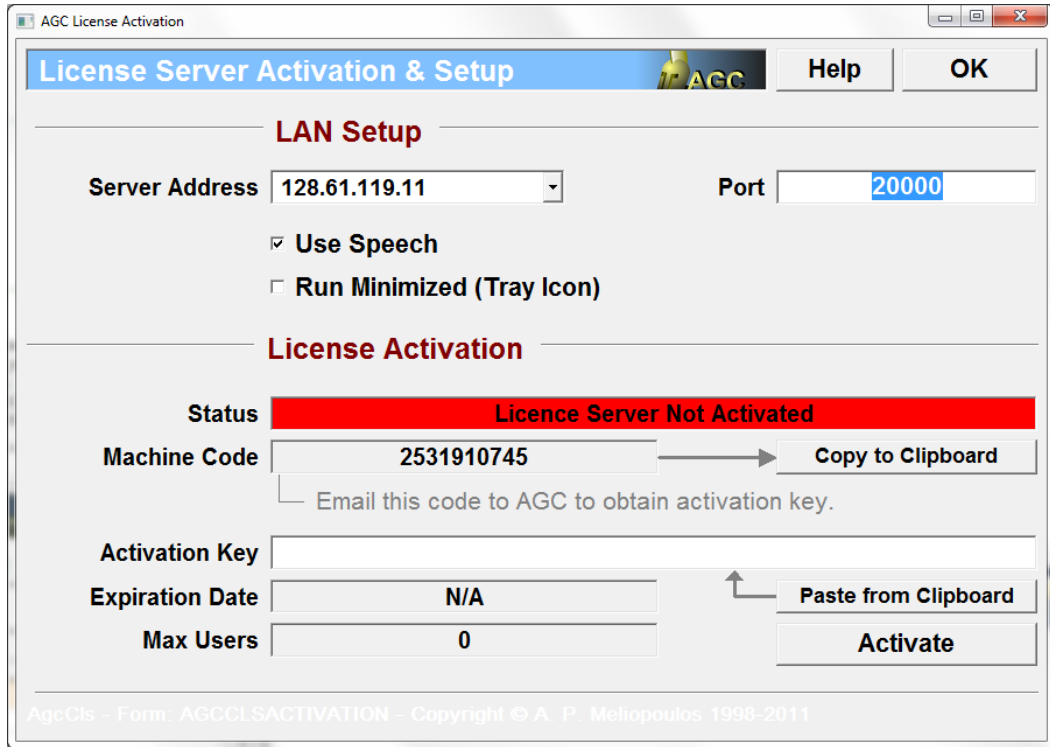
If you have already installed **AgcClis** and you are only extending the license number of users or expiration time you only need to enter a new activation key obtained from AGC. (If you have not already installed **AgcClis** please skip to the next section of this manual " *Concurrent License Server Installation*").

The activation key is a 32 character string provided by AGC, and contains your license expiration date and number of concurrent seats in encrypted format. After you receive your new activation key from AGC, follow the procedure described below:

1. Execute the AgcClis program. The program main window is illustrated below:



2. Click on the **Setup/Activate** button to open the activation window, illustrated below.
3. Enter the activation key in the field titled **Activation Key**. (Note: to reduce chances of typing errors you can **Paste** into the Activation Key field using the **Paste From Clipboard** button).



4. Click on the Activate button. If the activation is successful, the expiration date and maximum number of user fields will automatically be updated. (The entered parameters are saved in the file **AgcCls.cfg**). Click on the OK button to close the Activation window.
5. On the main AgcCls window, click on the **Start** button to turn on the concurrent license server. This completes the concurrent license server update on the license computer.
6. The new version of the WinIGS program should now be installed on the computers of all users. For these purpose follow the steps outlined in **Appendix A** of the WinIGS Users Manual. For convenience these steps are repeated below:

The **WinIGS** program is provided (a) on a CD, or (b) via a web download.

**Minimum Computer Configuration:**

- Microsoft Windows®-compatible personal computer.
- At Least 512 Mbytes of RAM\*.
- 20 Mb of free Disk Space.
- Graphics system with at least **1280 x1024** pixel resolution\*\*
- Mouse. A mouse with a wheel is preferable (The wheel is used for zooming).
- Windows® 95, 98, 2000, NT, XP, or Vista operating systems.

**NOTES**

\* Larger amount of RAM will allow faster solution of large scale systems.

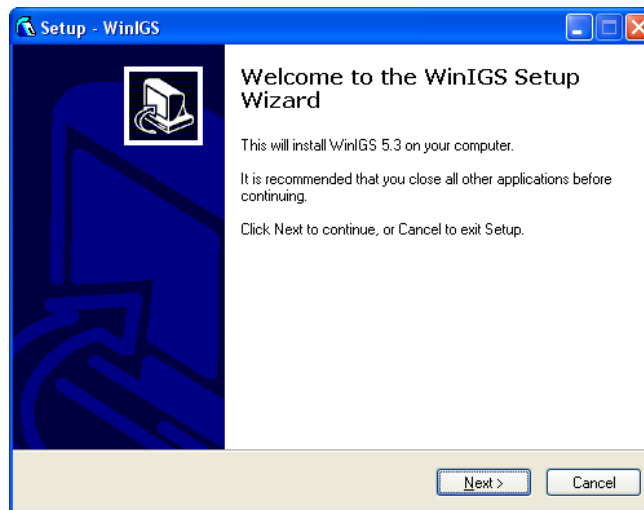
\*\* Even though WinIGS will run on computers with lower resolution than 1280 x1024, some of the functionality of the GUI may be lost. For example, some toolbar buttons may become inaccessible, and the quality of the graphs and drawings may deteriorate. Furthermore, a graphics card with OpenGL acceleration hardware will

dramatically speed-up 3-D rendered graphics.

The installation process is described next. If you have a previous version of WinIGS already installed it is recommended that the new version is installed “on top” of the existing installation – i.e. do not uninstall the existing older version. This will allow the new program to merge the existing conductor, cable and tower libraries with the new libraries. Merging will preserve any conductors, cables and towers created using the older program that are not included in the standard WinIGS installation.

### Installation using the CD:

Insert the **WinIGS** installation CD into the CD drive. The WinIGS installation program will be automatically executed. If your system security prevents installation autorun procedures navigate to the installation media and execute the WinIGS installation program **igsSetup.exe**. The installation program window is illustrated below:



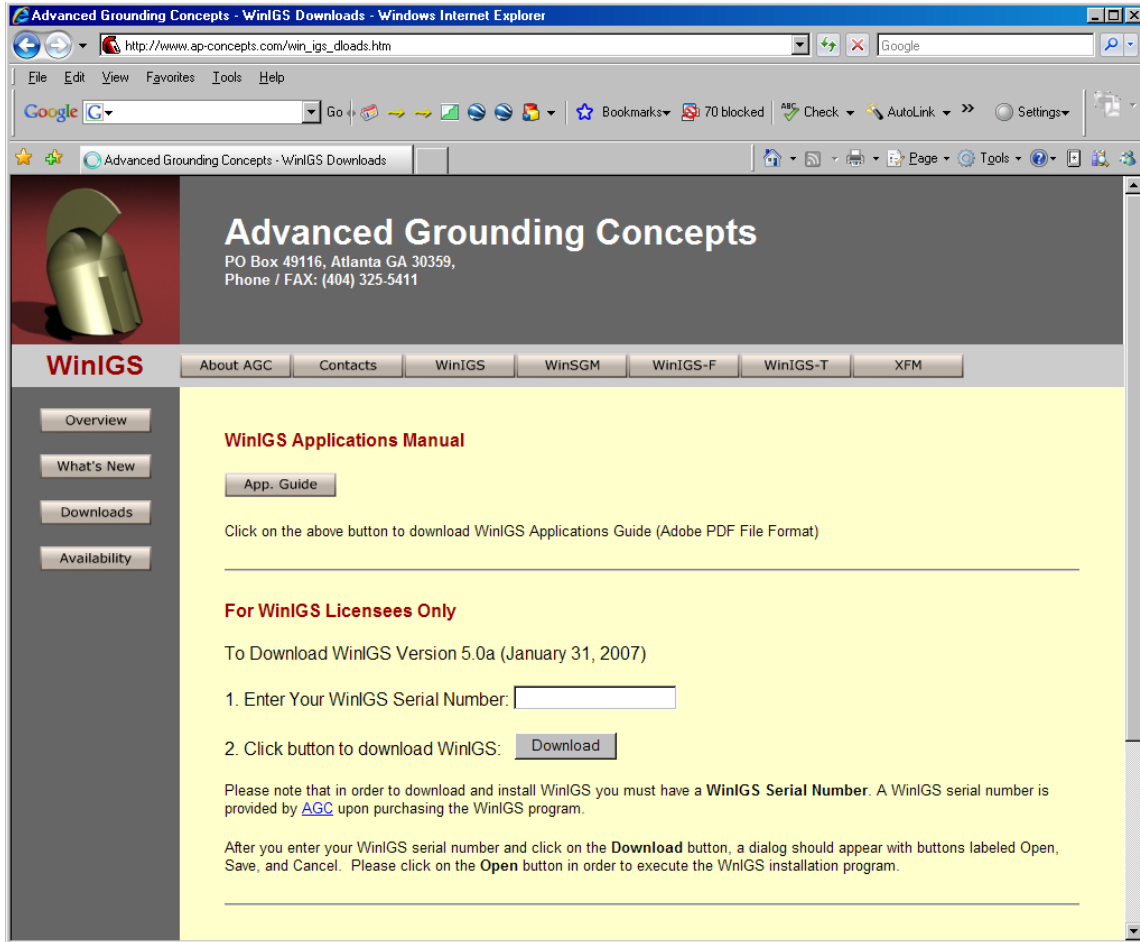
Click on the Next button, to proceed with the installation.

### Installation using web Download:

To download the program WinIGS, visit the web site:

[http://www.ap-concepts.com/win\\_igs\\_dloads.htm](http://www.ap-concepts.com/win_igs_dloads.htm)

You will “see” the screen below:



Enter your WinIGS Serial (provided in your license agreement). Then download the **WinIGS Program** by clicking on the **Download** button to download the WinIGS installation program **lgsSetup.exe**. Execute this program to complete the WinIGS installation.

### Executing WinIGS for the First Time

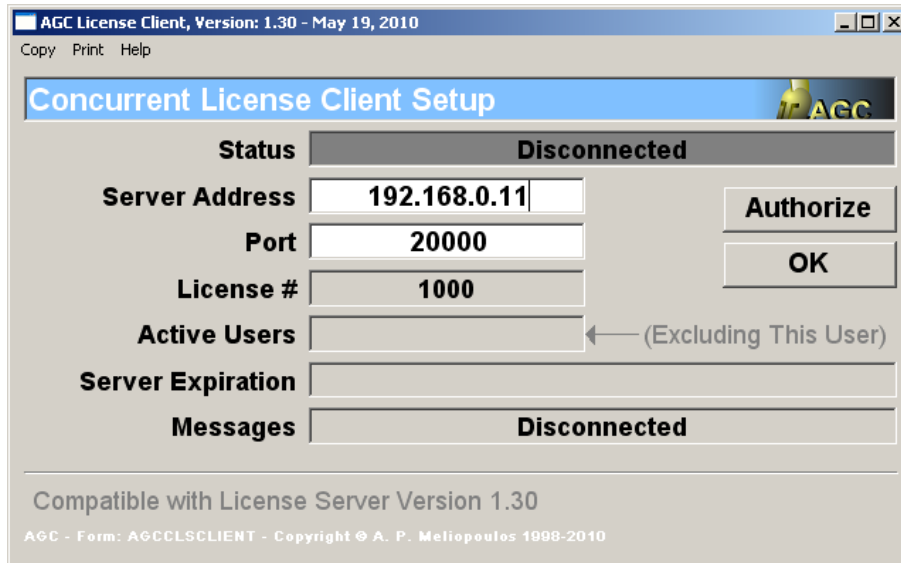
The first time WinIGS is executed, you must enter the WinIGS serial number in order to authenticate the installation. The following pop-up window will open upon the first time WinIGS is executed:



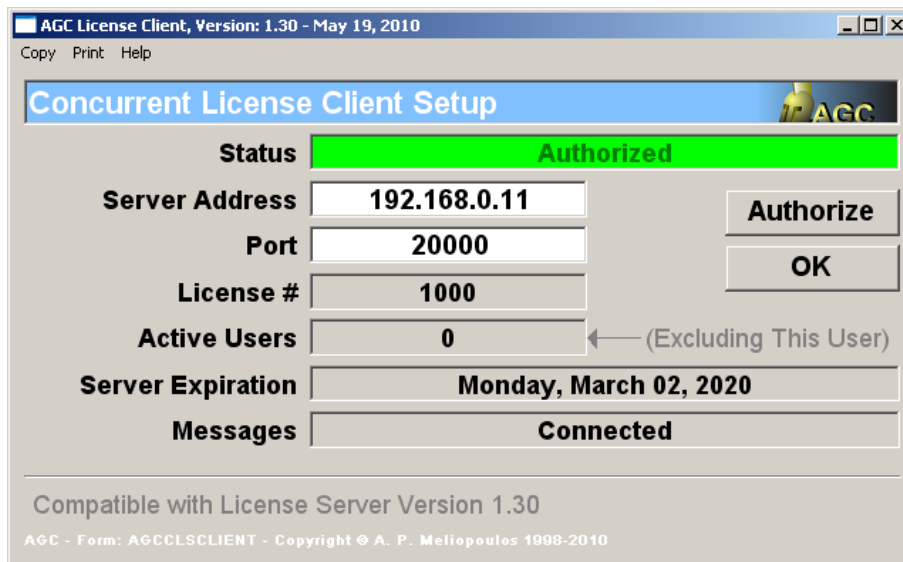
Enter your WinIGS serial number, click on the **Validate** button, and then click on the **Accept** button.

### Setting Up WinIGS Application to Access License Server

To setup WinIGS CLS access, execute WinIGS and click on the **CLS Setup** command, located under the **Help** Menu. This command opens the window illustrated below:



Type the **server address** and **port number** in the corresponding fields and click on the **Authorize** button. Then click on the **OK** button to close the window. (The server address and port number are permanently stored in the WinIGS Configuration file, so this procedure does not need to be repeated every time WinIGS is started).



**Successfully Authorized Setup Dialog**

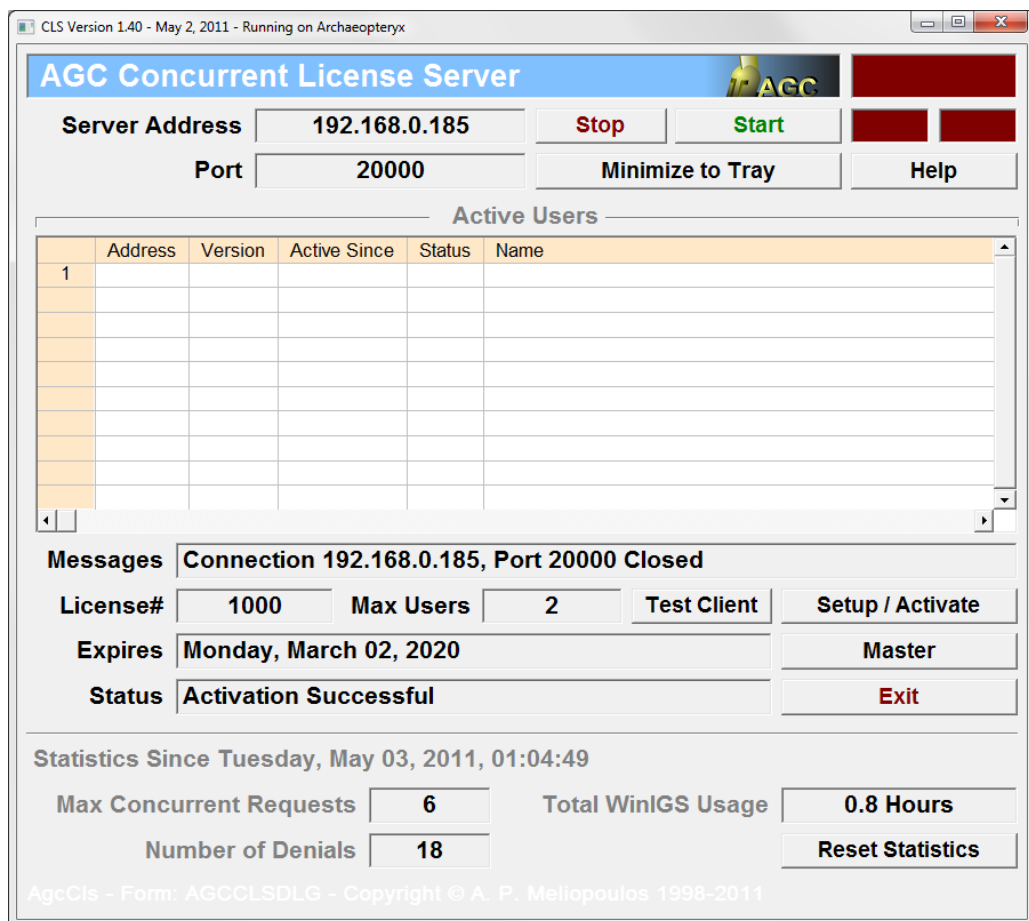
*Windows is a trademark of Microsoft.*

# Concurrent License Server Installation

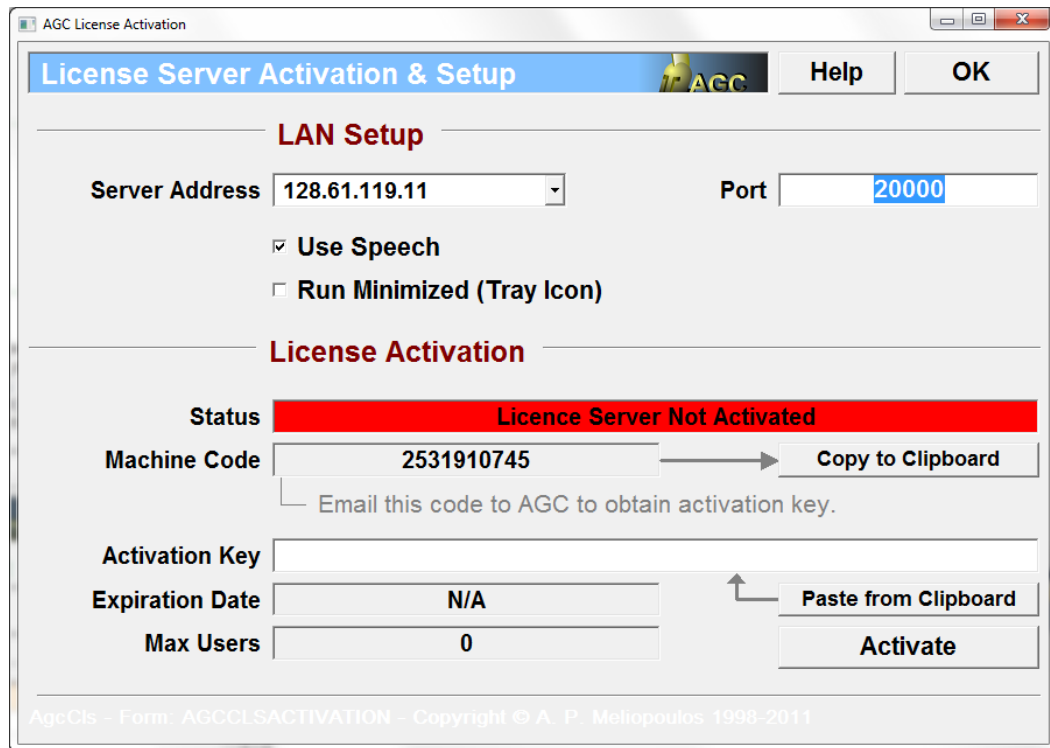
WinIGS is optionally distributed with a “Concurrent License Server” (CLS). This option allows the program to be installed on any number of computers and used by any number of users within an organization, as long as the total number of concurrent users does not exceed a specific limit. This option requires the installation of the Concurrent License Server program on a single computer. WinIGS running on other computers communicate with the server to obtain permission to operate, while the server keeps track of the concurrent number of users. The communication between WinIGS instances and the CLS is made via the local area network.


The CLS program is provided on an installation CD, or may be downloaded from the AGC web site ([www.ap-concepts.com](http://www.ap-concepts.com)). To install the CLS program, execute the installation program (AgcClsSetup.exe). Once the installation is completed, the CLS program must be activated. Activation is performed as follows:

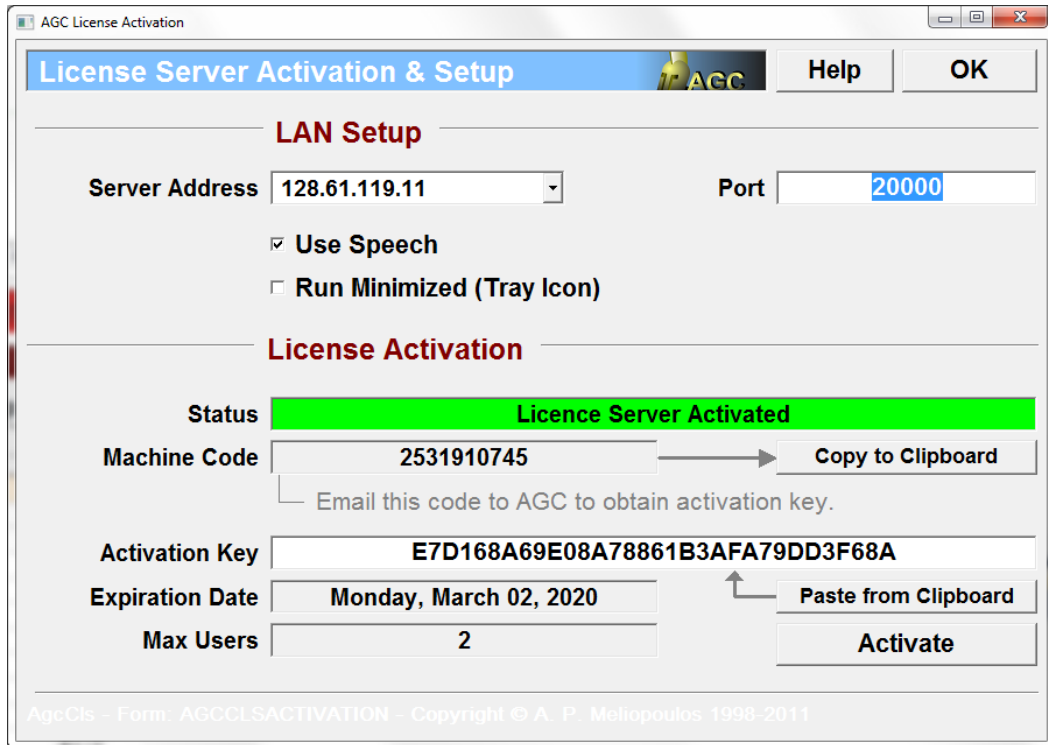
7. Execute the AgcCls program. The program main window is illustrated below:



8. Click on the **Setup/Activate** button to open the activation window, illustrated below. Copy the Machine Code (use the Copy to Clipboard button), and email it to AGC at [sakis@comcast.net](mailto:sakis@comcast.net)
9. AGC will return an email with the activation key. The activation key is a 32 character hexadecimal code. Paste this code into the **Activation Key** field (Use the paste from clipboard button).



10. Select the host **Server Address** to use for communicating between the CLS server and the WinIGS computers. (This list box will contain as many entries as the network interface cards installed in the host computer).
11. Select the local area network port number to use for communicating between the CLS server and the WinIGS computers. Note that you may have to modify your network setup to allow use of the selected port number. Type the selected port number in the **Port** field.
12. Make a note of the selected **Server Address** and **Port** number. This information is needed by the WinIGS users to access the CLS server.
13. If desired to run AgcCls in the background, check the **Run Minimized** checkbox. In this mode the program runs in the background, and an icon (  ) is placed on the task bar tray. The program main window can be reopened by left-clicking on this icon. If this option is selected, AgcCls will automatically run in the background on the next time the program is executed. (**Note:** running in the background is not equivalent to running as a service. To setup AgcCls to run as a service, see section [Running AgcCls as a Service](#)).
14. Click on the Activate button. If the activation is successful, the expiration date and maximum number of user fields will automatically be updated, as shown in the example below. (The entered parameters are saved in the file **AgcCls.cfg**).
15. Click on the OK button to close the Activation window.



16. On the main AgcCls window, click on the **Start** button to turn on the concurrent license server. **IMPORTANT:** If the Windows Security Alert widow illustrated below opens, click on the **Unblock** button, in order to allow the communication between WinIGS and the CLS program.



17. It is recommended that the AgcCls program is added to the windows start folder, so that it will automatically be executed if the computer is restarted.

This completes the installation of the Concurrent License Server. The activated and running server main display is illustrated below. Note that the **Port number** and the **Server Address** must be used with each WinIGS installation in order to access the CLS. The Active Users

window displays the WinIGS users presently connected to the server. Furthermore usage statistics are displayed at the lower part of the window. Specifically, statistics include:

- The maximum number of concurrent user requests, including denied requests due to the total number of users simultaneously attempting to use WinIGS.
- The total number of denied user attempts to use WinIGS
- The cumulative number of WinIGS usage hours.

The above statistics can be reset (Set to zero) by clicking on the **Reset Statistics** button.

The screenshot shows the AGC Concurrent License Server interface. At the top, it displays the title 'AGC Concurrent License Server' and a 'Run' button. Below this, there are input fields for 'Server Address' (192.168.0.185) and 'Port' (20000), along with 'Stop', 'Start', 'Minimize to Tray', and 'Help' buttons. A table titled 'Active Users' lists two active users: ARCHAEOPTERYX and ARCHIMEDES. Below the table, there is a 'Messages' section with a message: 'Connection 192.168.0.185, Port 20000 Closed'. The 'License#' is 1000, 'Max Users' is 2, and 'Expires' is Monday, March 02, 2020. The 'Status' is 'Activation Successful'. At the bottom, the 'Statistics Since Tuesday, May 03, 2011, 01:04:49' are shown: 'Max Concurrent Requests' is 6, 'Total WinIGS Usage' is 0.8 Hours, and 'Number of Denials' is 18. A 'Reset Statistics' button is also present.

Active Users					
	Address	Version	Active Since	Status	Name
1	192.168.0.185	1.40	May 03, 18:20:55	Authorized	ARCHAEOPTERYX
2	192.168.0.182	1.40	May 03, 18:20:55	Authorized	ARCHIMEDES

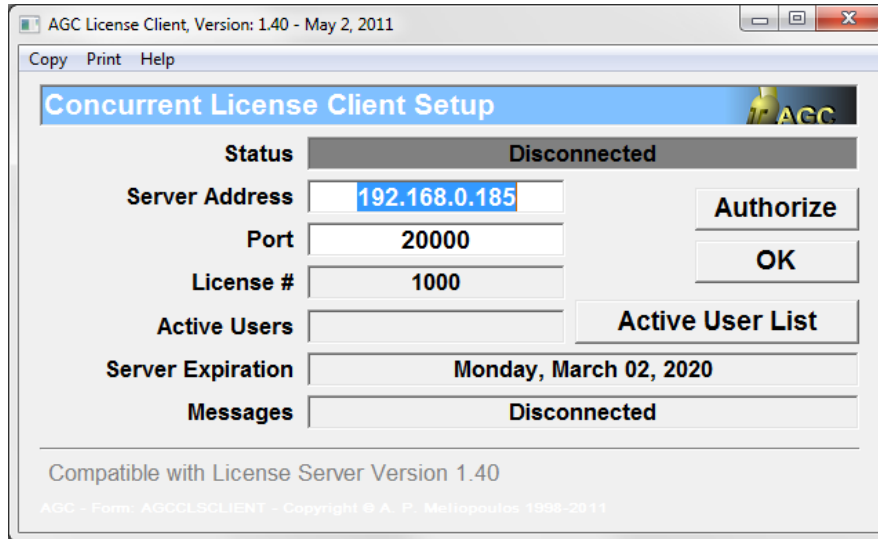
<b>Messages</b>	Connection 192.168.0.185, Port 20000 Closed				
<b>License#</b>	1000	<b>Max Users</b>	2	<b>Test Client</b>	<b>Setup / Activate</b>
<b>Expires</b>	Monday, March 02, 2020				<b>Master</b>
<b>Status</b>	Activation Successful				<b>Exit</b>

<b>Statistics Since Tuesday, May 03, 2011, 01:04:49</b>					
<b>Max Concurrent Requests</b>	6	<b>Total WinIGS Usage</b>	0.8 Hours		
<b>Number of Denials</b>	18	<b>Reset Statistics</b>			

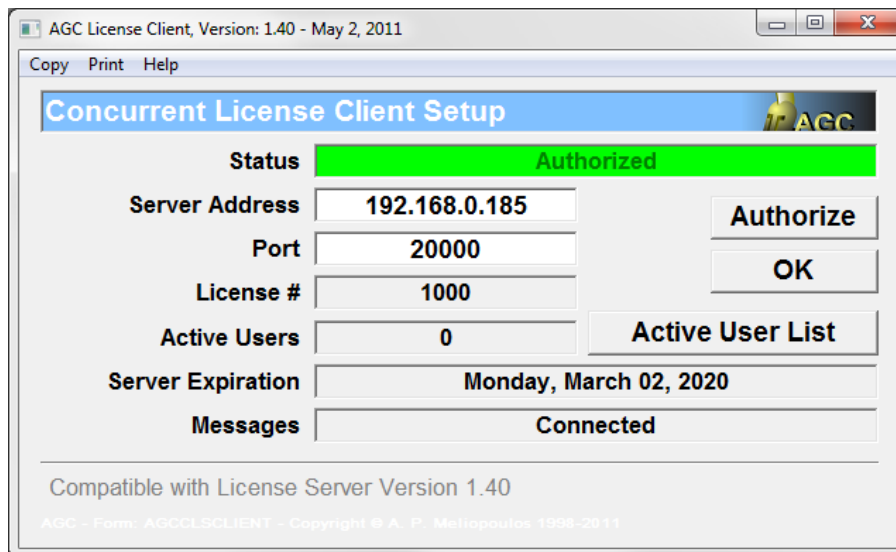
AgcCls - Form: AGCCLSDLG - Copyright © A. P. Meliopoulos 1998-2011

## Setting Up WinIGS Application to Access License Server

To setup WinIGS CLS access, execute WinIGS and click on the **CLS Setup** command, located under the **Help** Menu. This command opens the window illustrated below:



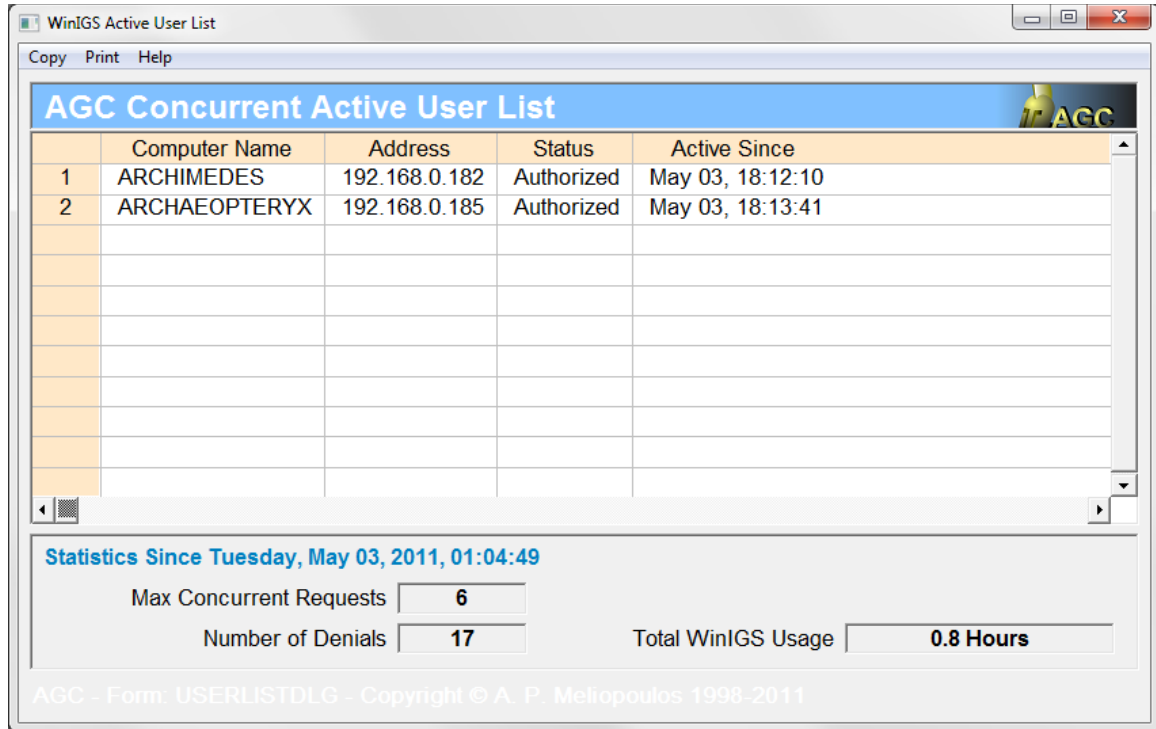
Type the **server address** and **port number** in the corresponding fields and click on the **Authorize** button. Then click on the **OK** button to close the window. (The server address and port number are permanently stored in the WinIGS Configuration file, so this procedure does not need to be repeated every time WinIGS is started).



**Successfully Authorized Setup Dialog**

You can see a list of active users by clicking on the **Active User List** button. A dialog then opens, illustrated below that contains a list of the WinIGS sessions. For each WinIGS session the list contains the computer name, the IP address of the computer, the authorization status, and the date and time that each WinIGS session started. Note that before clicking on the **Active User**

**List** button a connection to the server must have been establish. A connection is established by clicking on the Authorize button.



The screenshot shows a window titled "WinIGS Active User List" with a menu bar containing "Copy", "Print", and "Help". The main area is titled "AGC Concurrent Active User List" and contains a table with the following data:

	Computer Name	Address	Status	Active Since
1	ARCHIMEDES	192.168.0.182	Authorized	May 03, 18:12:10
2	ARCHAEOPTERYX	192.168.0.185	Authorized	May 03, 18:13:41

Below the table, there is a section titled "Statistics Since Tuesday, May 03, 2011, 01:04:49" with the following values:

- Max Concurrent Requests: 6
- Number of Denials: 17
- Total WinIGS Usage: 0.8 Hours

At the bottom of the window, the text reads: "AGC - Form: USERLISTDLG - Copyright © A. P. Meliopoulos 1998-2011"

## Running AgcCls as a Service

After verifying that AgcCls is installed, activated and functions correctly, you can setup AgcCls to run as a service as follows:

The following instructions assume that AgcCls has been installed in the directory c:\AgcCls\.

### STEP 1

Open a command widow (run CMD) and type the following commands:

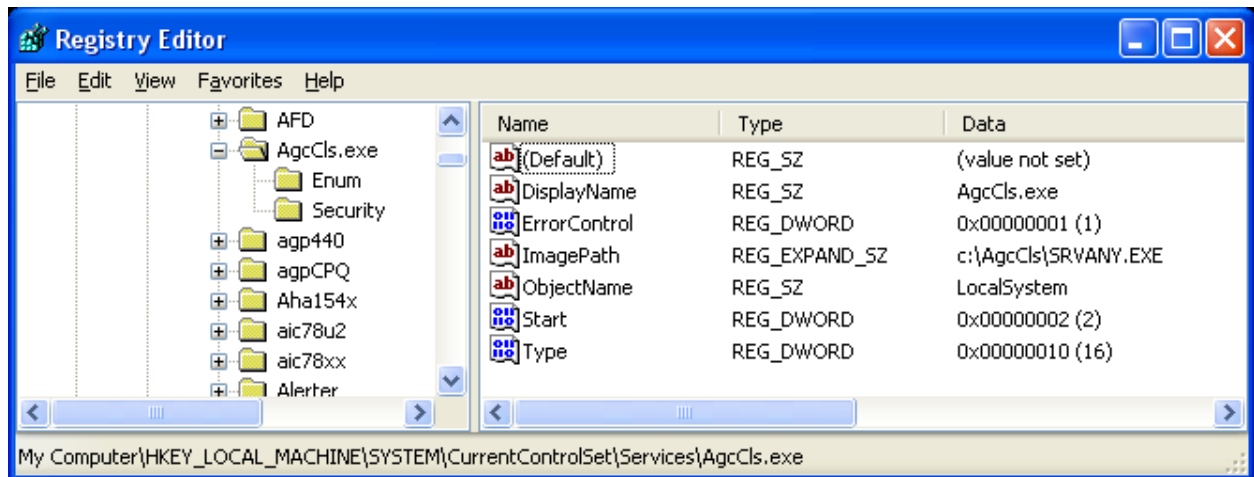
```
CD\AgcCls
INSTSRV AgcCls.exe c:\AgcCls\SRVANY.EXE
```

### STEP 2

Run Registry Editor (run Regedit) and select the following key:

```
HKEY_LOCAL_MACHINE\SYSTEM\CurrentControlSet\Services\AgcCls
```

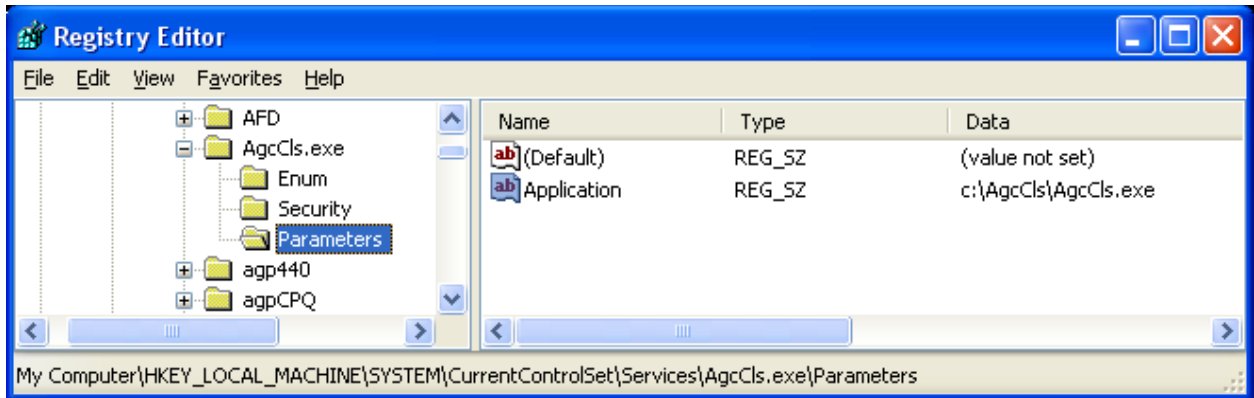
Verify that the **ImagePath** value points to c:\AgcCls\SRVANY.EXE (See also Registry Editor screen below)



Select **AgcCls** and add the *key*: **Parameters**

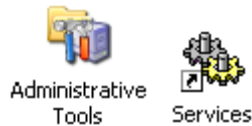
Select the **Parameters** key, add a *string value*, and set it as follows (See also Registry Editor screen below):

```
Name:      Application
Type :     REG_SZ
Data :     c:\AgcCls\AgcCls.exe
```



Close the registry editor.

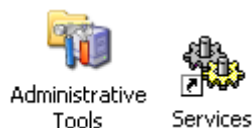
Note that the AgcCls will now run automatically as a service when the system is restarted. To stop and restart the AgcCls service use the Windows Services tool (Open Control Panel, click on Administrative Tools, then click on Services)



## Uninstalling the AgcCls Service

You can uninstall the AgcCls service if installed as described above, as follows:

1. Stop the AgcCls Service using the Windows Services tool (Open Control Panel, click on Administrative Tools, then click on Services, select AgcCls and click on [Stop](#) the Service)



2. Open a command window (run CMD) and type the following commands:

```
CD\AgcCls
INSTSRV AgcCls.exe REMOVE
```